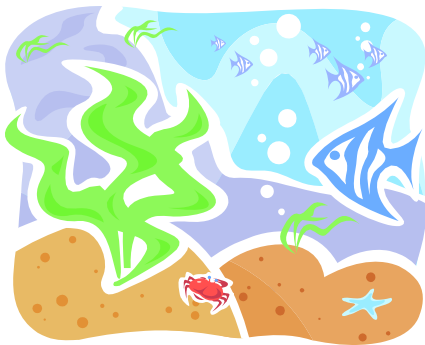


# SOLUBLE SEAWEED

## BENEFITS

### HORTICULTURE:

- Increases quality and yields
- Increase chlorophyll levels
- Stimulates shoot and root growth
- Improves plant health through delivery of trace elements
- Provides better establishment of seeds
- Increases resistance to temperature extremes ( drought & frost)
- Increases plants' resistance to pests and disease
- Improves flowering and fruit set
- Compatible with major fungicide and insecticides



DERIVED FROM  
ASCOPHYLLUM NODOSUM

### GOLF COURSES AND TURF:

- Increases activity of soil micro-organisms
- Increases root mass
- Increases leaf growth and tillering
- Helps withstand insect and disease activity
- Increases chlorophyll levels
- Increases tolerance of stress
- Increases tolerance of drought

### AGRICULTURE:

- Increases animal health and fertility
- Ideal for organically certified farms
- Allows for reduced N-P-K inputs
- Enhances crop quality and nutritional value
- Increase yields of all crops
- Easy to apply in many different application systems

**HOODRIDGE**<sup>TM</sup>

6699 NW 66th Way  
Parkland, FL 33067

(800) 745-6963  
[www.hoodridge.com](http://www.hoodridge.com)

# SOLUBLE SEAWEED

## SPECIFICATIONS

### SOLUBLE SEAWEED

#### **TYPICAL CHARACTERISTICS**

Appearance	Brown/Black Granular
Odor	Marine Seaweed Odor
Total Solids	92%-95%
Moisture	5%-8%
Organic Matter	45%-50%
Inorganic Matter	40%-45%
Solubility	100% in Water
Fiber	Less than 1%
Oil	Less than 1%

#### **TYPICAL ANALYSIS**

Aluminum	Less than 10 ppm
Boron	50-100 ppm
Calcium	1.5%-2.0%
Cobalt	3.5-6.5 ppm
Copper	20-45 ppm
Iodine	250-500 ppm
Iron	250-1000 ppm
Magnesium	2000-3000 ppm
Manganese	15-30 ppm
Nitrogen	0.8%-1.2%
Phosphorous	100-200 ppm
Potassium	15.0%-17.0%
Sodium	3.0%-4.5%
Sulfur	1.0%-2.0%

### SOLUBLE SEAWEED plus IRON

#### **TYPICAL CHARACTERISTICS**

Appearance	Brown/Black Granular
Odor	Marine Seaweed Odor
Total Solids	93%-96%
Moisture	4%-7%
Organic Matter	62%-66%
Inorganic Matter	26%-35%
Solubility	100% in Water

#### **TYPICAL ANALYSIS**

Calcium	25-30 ppm
Iron	9.5%-12%
Magnesium	0.2%-0.5%
Nitrogen	8.5%-10%
Phosphorous	5-10 ppm
Potassium	3.5%-5.0%
Sodium	1.0%-2.0%
Sulfur	6.5%-7.5%

**Growth Stimulants:** Both powders contains natural Cytokinin, Auxins, Gibberellins, and Betaines

**HOODRIDGE**<sup>TM</sup>

*6699 NW 66th Way  
Parkland, FL 33067*

**(800) 745-6963**

*www.hoodridge.com*